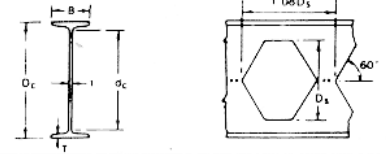


Castellated

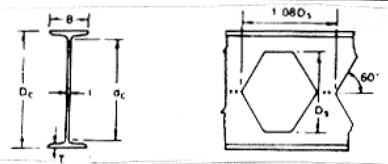


Section size	Castellated beam	Unit weight M		Section depth Dc	Section width B	Thickness		Depth between fillet, dc	Root radius r	Pitch of std. castellated 1.08Ds
						Web t	Flange T			
in(mm)	in(mm)	lb/ft	kg/m	mm	mm	mm	mm	mm	mm	mm
W4 - 4 x 4 (102 x 102)	6 x 4 (153 x 102)	13	19.35	156.7	103.1	7.11	8.76	126.38	6.4	110
W5 - 5 x 5 (127 x 127)	7 1/2 x 5 (191 x 127)	18	23.81	190.8	127.0	6.10	9.14	157.32	7.6	137
		19	28.28	194.3	127.8	6.86	10.92	157.26		137
W6 - 6 x 4 (152 x 102)	9 x 4 (228 x 102)	9	13.39	225.9	100.1	4.32	5.46	202.18	6.4	164
		12	17.86	229.2	101.6	5.84	7.11	202.18		164
		16	23.81	235.5	102.4	6.60	10.29	202.12		164
W6 - 6 x 6 (152 x 152)	9 x 6 (228 x 152)	15	22.32	228.1	152.1	5.84	6.60	202.10	6.4	164
		20	29.76	233.5	152.9	6.60	9.27	202.16		164
		25	37.20	238.1	154.4	8.13	11.56	202.18		164
W8 - 8 x 4 (203 x 102)	12 x 4 (305 x 102)	10	14.88	301.9	100.1	4.32	5.21	276.28	7.6	219
		13	19.35	304.4	101.6	5.84	6.48	276.24		219
		15	22.32	307.5	102.0	6.22	8.00	276.30		219
W8 - 8 x 5 1/4 (203 x 133)	12 x 5 1/4 (305 x 133)	18	26.79	308.3	133.4	5.84	8.38	276.34	7.6	219
		21	31.25	311.8	133.9	6.35	10.16	276.28		219
W8 - 8 x 6 1/2 (203 x 165)	12 x 6 1/2 (305 x 165)	24	35.72	302.9	165.0	6.22	10.16	262.18	10.2	219
		28	41.67	306.2	166.0	7.24	11.81	262.18		219
W8 - 8 x 8 (203 x 203)	12 x 8 (305 x 203)	31	46.13	304.7	203.1	7.24	11.05	262.20	10.2	219
		35	52.09	307.7	203.7	7.87	12.57	262.16		219
		40	59.53	311.1	205.0	9.14	14.22	262.26		219
		48	71.43	317.4	206.0	10.16	17.40	262.20		219
		58	86.31	323.7	208.8	12.95	20.57	262.16		219
		67	99.71	330.1	210.3	14.48	23.75	262.20		219
W10 - 10 x 4 (254 x 102)	15 x 4 (381 x 102)	12	17.86	377.7	100.6	4.83	5.33	351.84	7.6	274
		15	22.32	380.7	101.6	5.84	6.86	351.78		274
		17	25.30	383.8	101.9	6.10	8.38	351.84		274
		19	28.28	387.1	102.1	6.35	10.03	351.84		274
W10 - 10 x 5 1/4 (254 x 146)	15 x 5 1/4 (381 x 146)	22	32.74	385.3	146.0	6.10	9.14	351.82	7.6	274
		26	38.69	389.4	146.6	6.60	11.18	351.84		274
		30	44.64	392.9	147.6	7.62	12.95	351.80		274
W10 - 10 x 8 (254 x 203)	15 x 8 (381 x 203)	33	49.11	374.1	202.2	7.37	11.05	326.60	12.7	274
		39	58.04	379.0	202.8	8.00	13.46	326.68		274
		45	66.97	383.5	203.7	8.89	15.75	326.60		274
W10 - 10 x 10 (254 x 254)	15 x 10 (381 x 254)	49	72.92	380.5	254.0	8.64	14.22	326.66	12.7	274
		54	80.36	383.3	254.8	9.40	15.62	326.66		274
		60	89.29	386.6	256.0	10.67	17.27	326.66		274
		68	101.19	391.2	257.3	11.94	19.56	326.68		274
		77	114.58	396.2	258.8	13.46	22.10	326.60		274
		88	130.95	402.3	260.7	15.37	25.15	326.60		274
		100	148.81	408.9	262.6	17.27	28.45	326.60		274
		112	166.67	415.5	264.5	19.18	31.75	326.60		274

Note: \*Not included in regular rolling schedules.

Actual weights are based on lb/ft

Castellated

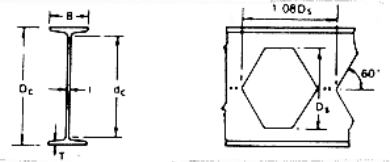


Section size	Castellated beam	Unit weight M		Section depth Dc	Section width B	Thickness		Depth between fillet, dc	Root radius r	Pitch of std. castellated 1.08Ds
						Web t	Flange T			
in(mm)	in(mm)	lb/ft	kg/m	mm	mm	mm	mm	mm	mm	mm
W12 - 12 x 4 (305 x 102)	18 x 4 (458 x 102)	14	20.83	455.0	100.0	5.08	5.72	428.36	7.6	329
		16	23.81	457.0	101.3	5.59	6.73	428.34		
		19	28.28	461.4	101.7	5.97	8.89	428.42		
		22	32.74	465.2	102.4	6.60	10.80	428.40		
W12 - 12 x 6 1/2 (305 x 165)	18 x 6 1/2 (458 x 165)	26	38.69	462.9	164.8	5.84	9.65	428.40	7.6	329
		30	44.64	465.9	165.6	6.60	11.18	428.34		
		33	52.09	470.0	166.6	7.62	13.21	428.38		
W12 - 12 x 8 (305 x 203)	18 x 8 (458 x 203)	40	59.53	455.8	203.3	7.49	13.08	399.24	15.2	329
		45	66.97	458.8	204.3	8.51	14.60	399.20		
		50	74.41	462.1	205.2	9.40	16.26	399.18		
W12 - 12 x 10 (305 x 254)	18 x 10 (458 x 254)	53	78.87	458.8	253.9	8.76	14.60	399.20	15.2	329
		58	86.31	462.1	254.3	9.14	16.26	399.18		
W12 - 12 x 12 (305 x 305)	18 x 12 (458 x 305)	65	96.73	460.3	304.8	9.91	15.37	399.16	15.2	329
		72	107.14	463.7	305.8	10.92	17.02	399.26		
		79	117.56	467.0	306.8	11.94	18.67	399.26		
		87	129.46	470.8	308.0	13.08	20.57	399.26		
		96	142.86	475.3	308.9	13.97	22.86	399.18		
		106	157.74	479.9	310.4	15.49	25.15	399.20		
		120	178.57	485.7	312.9	18.03	28.07	399.16		
		136	202.38	493.1	315.0	20.07	31.75	399.20		
		152	226.19	500.7	317.0	22.10	35.56	399.18		
		170	253.98	508.9	319.3	24.38	39.62	399.26		
		190	282.74	517.8	321.8	26.92	44.07	399.26		
W12* - 12 x 12 (305 x 305)	18 x 12 (458 x 305)	210	312.50	526.1	324.9	29.97	48.26	399.18	15.2	329
		230	342.26	534.8	327.5	32.64	52.58	399.24		
		252	375.00	543.9	330.3	35.43	57.15	399.20		
		279	415.18	555.1	333.8	38.86	62.74	399.22		
		305	453.87	567.0	336.2	41.28	68.71	399.18		
		336	500.00	579.7	340.0	45.08	75.06	399.18		
W14 - 14 x 5 (356 x 127)	21 x 5 (534 x 127)	22	32.74	527.0	127.0	5.84	8.51	489.58	10.2	385
		26	38.69	531.3	127.6	6.48	10.67	489.56		
W14 - 14 x 6 3/4 (356 x 171)	21 x 6 3/4 (534 x 171)	30	44.64	529.5	170.9	6.86	9.78	489.54	10.2	385
		34	50.60	533.1	171.3	7.24	11.56	489.58		
		38	56.55	536.1	172.0	7.87	13.08	489.54		
W14 - 14 x 8 (356 x 203)	21 x 8 (534 x 203)	43	63.99	525.0	203.1	7.75	13.46	467.68	15.2	385
		48	71.43	528.3	204.0	8.64	15.11	467.68		
		53	78.87	531.6	204.7	9.40	16.76	467.68		
W14 - 14 x 10 (356 x 254)	21 x 10 (534 x 254)	61	90.78	530.8	253.9	9.52	16.38	467.64	15.2	385
		68	101.19	534.6	254.9	10.54	18.29	467.62		
		74	110.12	537.9	255.8	11.43	18.94	467.62		
		82	122.02	541.5	257.3	12.95	21.72	467.66		

Note: \*Not included in regular rolling schedules.

Actual weights are based on lb/ft

Castellated

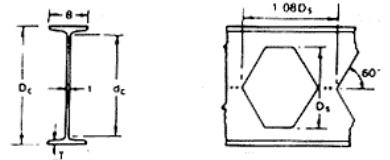


Section size	Castellated beam	Unit weight M		Section depth Dc	Section width B	Thickness		Depth between fillet, dc	Root radius r	Pitch of std. castellated 1.08Ds
						Web t	Flange T			
in(mm)	in(mm)	lb/ft	kg/m	mm	mm	mm	mm	mm	mm	mm
W14 - 14 x 14 1/2 (356 x 368)	21 x 14 1/2 (534 x 368)	90	133.93	534.1	368.8	11.18	18.03	467.64	15.2	385
		99	147.32	537.7	370.0	12.32	19.81	467.68		
		109	162.20	541.7	371.0	13.34	21.84	467.62		
		120	178.57	545.8	372.6	14.99	23.88	467.64		
		132	196.43	550.4	374.0	16.38	26.16	467.68		
W16 - 16 x 5 1/2 (406 x 140)	24 x 5 1/2 (609 x 140)	26	38.69	601.5	139.7	6.35	8.76	563.58	10.2	438
		31	46.13	606.4	140.3	6.98	11.18	563.64		
W16 - 16 x 7 (406 x 178)	24 x 7 (609 x 178)	36	53.57	605.8	177.4	7.49	10.92	563.56	10.2	438
		40	59.53	609.7	177.7	7.75	12.83	563.64		
		45	66.97	612.7	178.7	8.76	14.35	563.64		
		50	74.41	616.0	179.6	9.65	16.00	563.60		
		57	84.83	620.3	180.8	10.92	18.16	563.58		
W16 - 16 x 10 1/4 (406 x 260)	24 x 10 1/4 (609 x 260)	67	99.71	617.8	260.0	10.03	16.89	563.62	10.2	438
		77	114.58	622.6	261.5	11.56	19.30	563.60		
		89	132.44	628.4	263.3	13.33	22.22	563.56		
		100	148.81	634.0	264.8	14.86	25.02	563.56		
W18 - 18 x 6 (457 x 152)	27 x 6 (686 x 152)	35	52.09	678.1	152.4	7.62	10.80	636.10	10.2	494
		40	59.53	683.2	152.8	8.00	13.34	636.12		
		46	68.46	687.2	153.9	9.14	15.37	636.06		
W18 - 18 x 7 1/2 (457 x 191)	27 x 7 1/2 (686 x 191)	50	74.41	685.4	190.4	9.02	14.48	636.04	10.2	494
		55	81.85	688.5	191.3	9.91	16.00	636.10		
		60	89.29	691.6	191.9	10.54	17.65	636.10		
		65	96.73	694.6	192.8	11.43	19.05	636.10		
		71	105.65	697.6	193.9	12.57	20.57	636.06		
W18 - 18 x 11 (457 x 279)	27 x 11 (686 x 279)	76	113.10	691.0	280.3	10.80	17.27	636.06	10.2	494
		86	127.98	693.6	281.7	12.19	19.56	636.08		
		97	144.35	700.7	283.1	13.59	22.10	636.10		
		106	157.74	704.2	284.5	14.99	23.88	636.04		
		119	177.08	710.3	286.1	16.64	26.92	636.06		
W21 - 21 x 6 1/2 (533 x 165)	31 1/2 x 6 1/2 (800 x 165)	44	65.48	791.3	165.1	8.89	11.43	743.04	12.7	576
		50	74.41	795.6	165.9	9.65	13.58	743.02		
		57	84.83	801.4	166.5	10.29	16.51	742.98		
W21 - 21 x 8 1/4 (533 x 210)	31 1/2 x 8 1/4 (800 x 210)	62	92.26	799.6	209.3	10.16	15.62	742.96	12.7	576
		68	101.19	803.2	210.1	10.92	17.40	743.00		
		73	108.63	806.0	210.7	11.66	18.80	743.00		
		83	123.51	810.8	212.2	13.08	21.21	742.98		
		93	138.39	815.6	213.9	14.73	23.62	742.96		
W21 - 21 x 12 1/4 (533 x 312)	31 1/2 x 12 1/4 (800 x 312)	101	150.30	809.0	312.2	12.70	20.32	742.96	12.7	576
		111	165.18	812.9	313.4	13.97	22.22	743.06		
		122	181.55	817.2	314.7	15.24	24.38	743.04		
		132	196.43	821.0	316.0	16.51	26.29	743.02		
		147	218.75	826.8	317.8	18.29	29.21	742.98		

Note: \*Not included in regular rolling schedules.

Actual weights are based on lb/ft

Castellated



Section size	Castellated beam	Unit weight M		Section depth Dc	Section width B	Thickness		Depth between fillet, dc	Root radius r	Pitch of std. castellated 1.08Ds
						Web t	Flange T			
in(mm)	in(mm)	lb/ft	kg/m	m m	m m	m m	m m	m m	m m	m m
W24 - 24 x 7 (610 x 178)	36 x 7 (915 x 178)	55	81.85	903.7	177.9	10.03	12.83	852.64	12.7	659
		62	92.27	908.0	178.8	10.92	14.99	852.62		659
W24 - 24 x 9 (610 x 229)	36 x 9 (915 x 229)	68	101.19	907.7	227.7	10.54	14.86	852.58	12.7	659
		76	113.10	912.6	228.3	11.18	17.27	852.66		659
		84	125.00	917.1	229.1	11.94	19.56	852.58		659
		94	139.88	922.5	230.3	13.08	22.22	852.66		659
W24 - 24 x 12 1/4 (610 x 324)	36 x 12 1/4 (915 x 324)	104	154.76	916.1	323.8	12.70	19.05	852.60	12.7	659
		117	174.11	921.1	325.1	13.97	21.59	852.62		659
		131	194.94	926.8	326.5	15.37	24.38	852.64		659
		146	217.27	933.4	327.7	16.51	27.69	832.62		659
		162	241.07	940.0	329.1	17.91	30.99	852.62		659
W27 - 27 x 10 (686 x 254)	40 1/2 x 10 (1029 x 254)	84	125.00	1021.4	253.0	11.68	16.26	958.48	15.2	741
		94	139.88	1026.8	253.7	12.45	18.92	958.56		741
		102	151.78	1031.1	254.4	13.08	21.08	958.54		741
		114	169.64	1036.4	255.8	14.48	23.62	958.56		741
W27* - 27 x 14 (686 x 356)	40 1/2 x 14 (1029 x 366)	146	217.26	1038.5	354.7	15.37	24.76	958.58	15.2	741
		161	239.58	1043.8	356.1	16.76	27.43	958.54		741
		178	264.88	1049.4	357.8	18.42	30.23	958.54		741
W30 - 30 x 10 1/2 (762 x 267)	45 x 10 1/2 (1143 x 267)	99	147.32	1134.1	265.4	13.21	17.02	1067.06	16.5	823
		108	160.71	1138.7	266.1	13.84	19.30	1067.10		823
		116	172.62	1143.3	266.6	14.35	21.59	1067.12		823
		124	184.52	1147.3	267.1	14.86	23.62	1067.06		823
		132	196.43	1150.9	267.8	15.62	25.40	1067.10		823
W30* - 30 x 15 (762 x 381)	45 x 15 (1143 x 381)	173	257.44	1154.2	380.6	16.64	27.05	1067.10	16.5	823
		191	284.23	1160.2	382.0	18.03	30.10	1067.00		823
		211	313.99	1166.9	383.7	19.68	33.40	1067.10		823
W33 - 33 x 11 1/2 (838 x 292)	49 1/2 x 11 1/2 (1257 x 292)	118	175.60	1253.6	291.6	13.97	18.80	1180.40	17.8	905
		130	193.45	1259.5	292.4	14.73	21.72	1180.46		905
		141	209.82	1264.8	293.0	15.37	24.38	1180.44		905
		152	266.19	1269.6	293.8	16.18	26.80	1180.40		905
W33* - 33 x 15 1/4 (838 x 400)	49 1/2 x 15 1/4 (1257 x 400)	201	299.11	1274.5	399.9	18.16	29.21	1180.48	17.8	905
		221	328.87	1280.8	401.4	19.68	32.38	1180.44		905
		241	358.63	1287.2	402.8	21.08	35.56	1180.48		905
W36 - 36 x 12 (914 x 305)	54 x 12 (1371 x 305)	135	200.89	1360.0	303.5	15.24	20.07	1281.86	19.0	987
		150	223.21	1367.6	304.2	15.88	23.88	1281.84		987
		160	238.10	1371.7	304.8	16.51	25.91	1281.88		987
		170	253.98	1375.7	305.6	17.27	27.94	1281.82		987
		182	270.83	1379.8	306.7	18.42	29.97	1281.86		987
		194	288.69	1383.8	307.7	19.43	32.00	1281.80		987
		210	312.50	1388.9	309.4	21.08	34.54	1281.82		987
W36* - 36 x 16 1/2 (914 x 419)	54 x 16 1/2 (1371 x 419)	230	342.26	1368.9	418.3	19.30	32.00	1256.70	24.1	987
		245	364.58	1373.4	419.4	20.32	34.29	1256.62		987
		260	386.90	1378.0	420.4	21.34	36.58	1256.64		987
		280	416.67	1384.6	421.5	22.48	39.88	1256.64		987
		300	446.43	1390.2	423.0	24.00	42.67	1256.66		987

Note: \*Not included in regular rolling schedules.

Actual weights are based on lb/ft